

4 FPS

celluloi

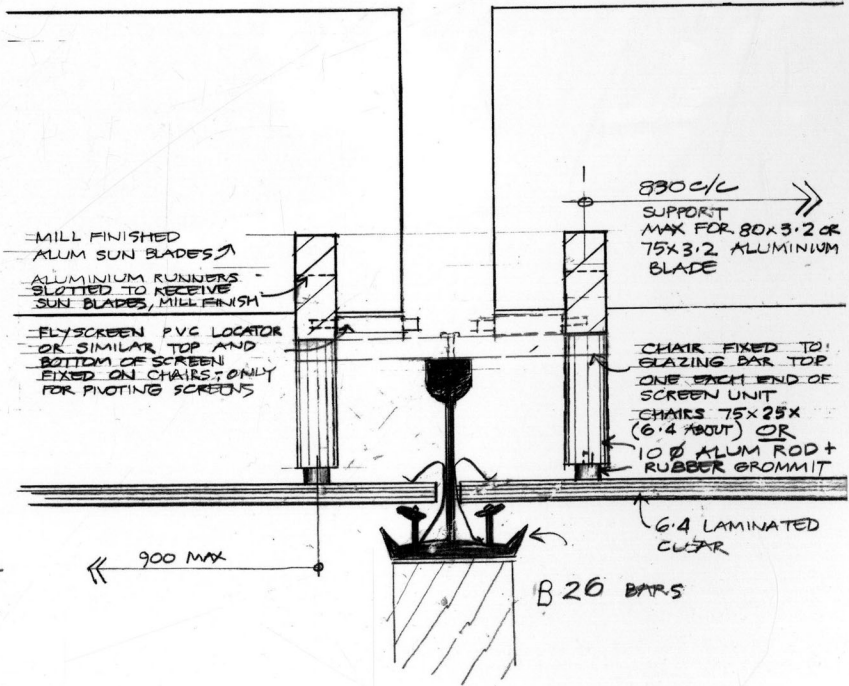
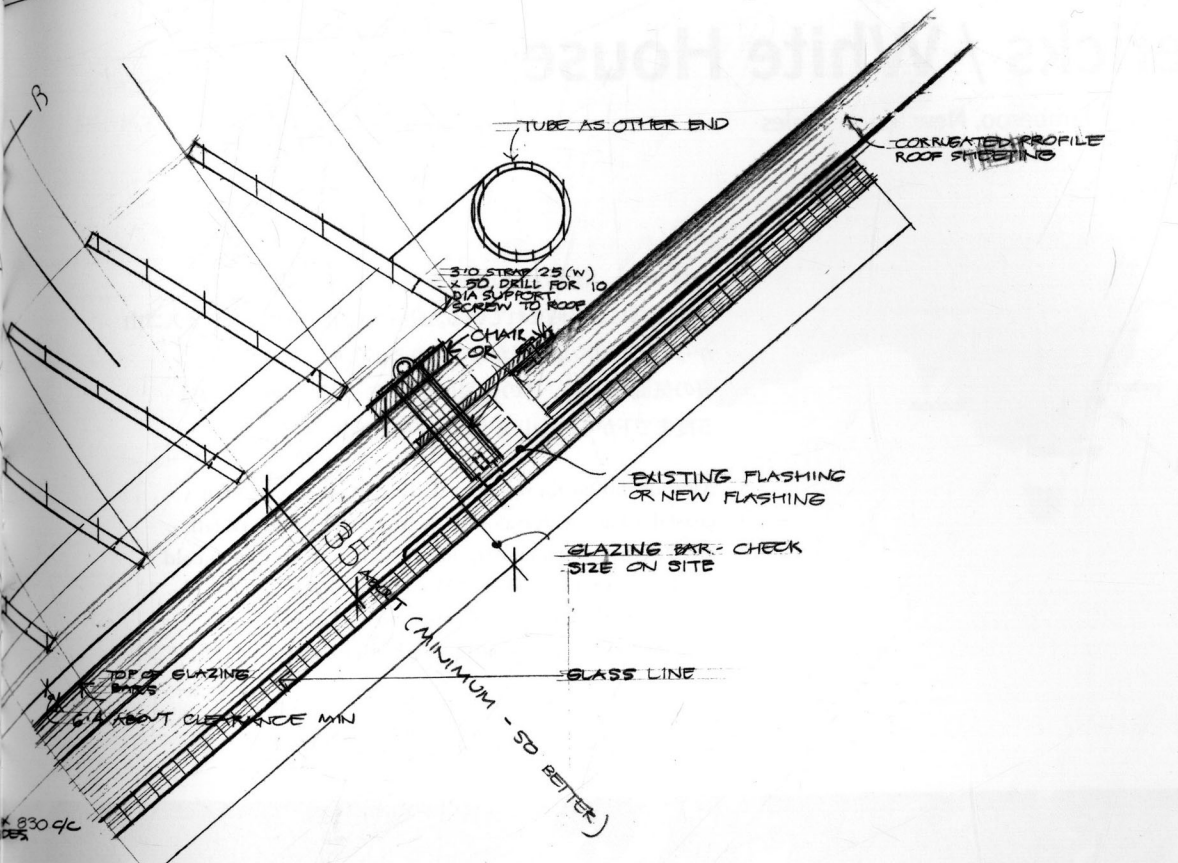
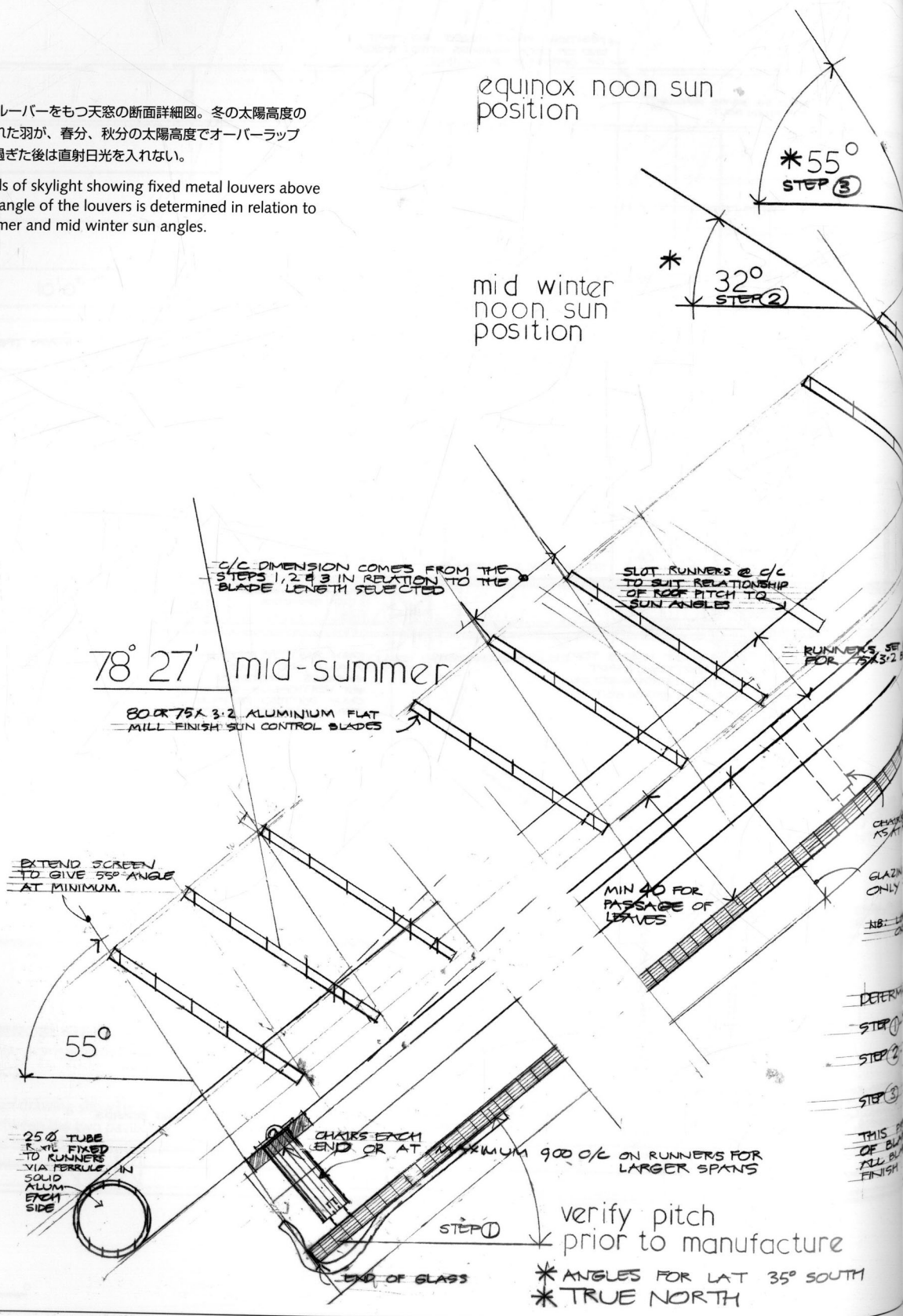
外付けの金属ルーバーをもつ天窓の断面詳細図。冬の太陽高度の角度に固定された羽が、春分、秋分の太陽高度でオーバーラップして、春分を過ぎた後は直射日光を入れない。

Section details of skylight showing fixed metal louvers above glazing. The angle of the louvers is determined in relation to the mid summer and mid winter sun angles.

equinox noon sun position

mid winter noon sun position

78° 27' mid-summer



SECTIONS

MURCUTT - 11/9/83. ARCHITECT

STACKED TREASURES / June 2002 ...the new *Grand Egyptian Museum* stands on a plateau in Gizeh, with pyramids. We stacked the museological programme so as to create a larger volume that would spatially en up the building. The programme is arranged on staggered floor slabs about a gigantic open internal space with side altars. There are two routes, a fast escalator route that spirals up on the rim of the cavity, and a slow stairs inside the volume's double facade. The two converge at strategic places and culminate in a panoramic that overlooks the sweltering desert and the Gizeh pyramids. The vertical stratification conveys visitors treasure chambers ranged round the great cavity, like a journey through the history and culture of Ancient

